

Photonic Structures in Biology: A Possible Blueprint for Nanotechnology

Invited Review Article

Frank P. Barrows^{1,2} and Michael H. Bartl^{1,*}

¹ Department of Chemistry and Materials Research Science and Engineering Center, University of Utah, Salt Lake City, Utah, USA.

² Department of Materials Science and Engineering, Northwestern University, Evanston, Illinois, USA

* Corresponding author E-mail: bartl@chem.utah.edu

Received 26 October 2013; Accepted 7 January 2014

DOI: 10.5772/58289

© 2014 The Author(s). Licensee InTech. This is an open access article distributed under the terms of the Creative Commons Attribution License (<http://creativecommons.org/licenses/by/3.0>), which permits unrestricted use, distribution, and reproduction in any medium, provided the original work is properly cited.

Abstract Nature has had millions of years to optimize photonic crystals - an endeavour mankind only really began in the 1980s. Often, we attempt to mimic and expand upon nature's designs in creating photonic structures that meet our technology-driven needs. While this strategy can be fruitful in fabricating novel architectures, one has to keep in mind that nature designed and optimized these structures for specific applications (e.g., colouration, camouflaging, signalling), but certainly not for use in photonic chips and optical circuits. To take full advantage of biological structures as blueprints for nanotechnology, it is important to understand the purpose and development of natural structural colours. In this review, we will discuss important aspects of the design, formation and evolution of the structures embedded in beetle exoskeletons that are responsible for their striking colouration. In particular, we will focus on the purpose of structural colours for camouflaging, mimicry and signalling. We will discuss their evolutionary and ecological development and compare the development of beetles with and without structural colours. Examples of non-colour-related structural functionalities will also be introduced and briefly discussed. Finally, a brief overview of nature's synthesis strategies for these highly evolved structures

will be given, with particular focus on membrane assembly.

Keywords Photonic Crystals, Bioinspiration, Structural Colors

1. Introduction

The origins of most man-made colours are based on molecular pigments, while nature has developed a different type of colouration - one not based on molecules but on supramolecular structures. Such structural colours can be found in insects, birds and marine animals.¹ For example, the origin of the deep blue wings of the *Morpho rhetenor* butterfly and of the brilliantly green exoskeleton of the weevil *Lamprocyphus augustus* lies in a distinct nanostructure built into the insects' biopolymeric wing scales and exoskeletons. While the exact structural features may vary from insect to insect, these nanostructures have in common a high degree of periodic ordering in one, two or three dimensions, with structural features on the order of several hundreds of nanometres (Figure 1).^{2,3} The mechanism behind structural colours is based on diffraction and specular reflection.^{4,5} Most of the

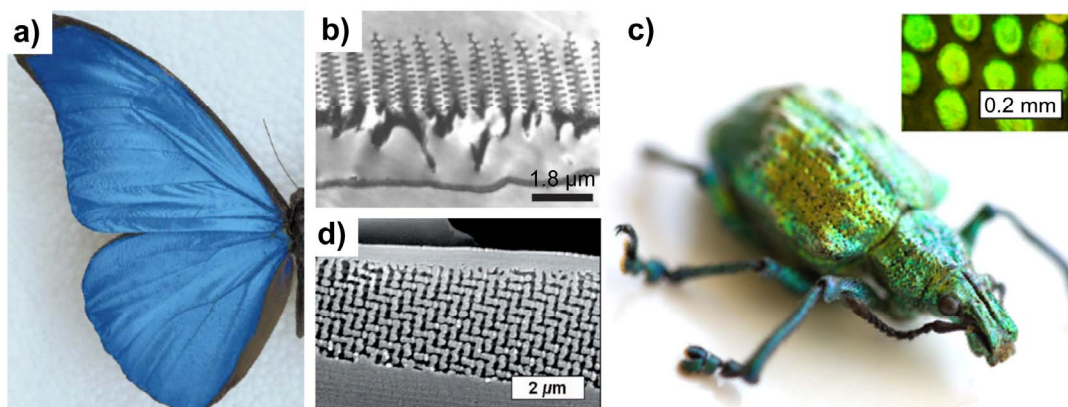


Figure 1. a) Photograph of the butterfly *Morpho rhetenor* and b) transmission electron micrograph of the photonic structure built into the butterfly's wings. c) Photograph of the weevil *Lamprocyphus augustus* and d) scanning electron microscopy image of a cross-section of the photonic structure responsible for the weevil's green colouration. Figures a) and b) reprinted by permission from Macmillan Publishers Ltd: Nature (reference [3]), copyright (2003). Figures c) and d) adapted from Ref. [88]. Copyright Wiley-VCH Verlag GmbH & Co. KGaA. Reproduced with permission.

incident light propagates through the biopolymeric structures without being significantly affected; however, a selected range of wavelengths (those with certain proportionalities to the length scale of the structure's periodicity) are directionally reflected and produce the angle-dependent iridescent colours seen in many insects, birds and marine animals.

Such structural colours are interesting examples of nature's ability to create function by moulding and shaping *per se* non-functional compounds into hierarchically defined shapes. Similar concepts of creating function through structuring have become a corner stone of nanomaterials and nanotechnology over the course of the last 25 years. The resulting materials - often classified as metamaterials - are composed of conventional compounds (metals, semiconductors, ceramics or polymers) but display unconventional properties as a result of their nanostructures. For example, the electronic and optical properties of semiconductors can be dramatically altered by synthesizing them in the form of spheres or rods of sizes of a few nanometres;^{6,7} a transparent ceramic can be turned into a coloured coating by shaping it into a three-dimensionally periodic architecture with a lattice constant of a few hundred nanometres;^{8,9} alternatively, a polymer film can be transformed into a super-hydrophobic, self-cleaning surface by introducing hierarchically organized nano-to-micrometre bumps and hairs.^{10,11}

While there are many examples of materials with interesting structure-function relations, this review article will focus on structural colours - or 'photonic crystals', as their synthetic counterparts are termed. The aim of this article is to provide insights into structural colours in biology and - by comparing biological photonics with currently available man-made photonics - to provide inspiration for the design of novel optical components and devices.

2. Photonic Structures in Biology and Technology

The purpose and use of photonic structures varies strongly for biological and technological applications, making it sometimes difficult to compare and adapt the structure-function properties of biological photonic structures for technological applications. Photonic structures in biology are mainly produced to create colouration for camouflage, signalling or disguise.^{1,12} Since light conditions can vary strongly for different habitats, biological photonic structures were optimized to create specific reflection colours under various illumination conditions, from glaring sunlight to the diffuse and dim lighting on forest floors. In addition, these structures are in general designed to fulfil given functions in an organism and are thus integrated into larger body parts, such as feathers, wings, hair, skin, bones, exoskeletons, etc. (Figure 2). In contrast, to create functional devices for technology applications, photonic structures must be integrated into optical circuits and photonic chips - environmental conditions very different from biological ones. Moreover, the purpose of photonic structures in modern devices is not to produce colours but to guide, store and amplify light.¹³⁻¹⁵ These structures thus need to be optimized in very different ways than is the case with their biological counterparts.

A central goal with many technological photonic crystals is to create a complete - or omni-directional - photonic band gap (i.e., a frequency range for which the propagation of light is classically forbidden in all directions). The concept of photonic crystals and band gaps were independently proposed by Yablonovitch¹⁶ and John¹⁷ in 1987 with the goal of controlling the radiative properties of materials and induce photon localization, respectively. The basic idea of a photonic crystal is to fabricate periodic dielectric composites with periodicities on the order of optical wavelengths. In such

structures, the behaviour of light is governed by Bragg diffraction, resulting in band structure properties similar to electronic semiconductors. Unfortunately, calculations and band structure modelling have revealed a complete photonic band gap that forms only under very strict structural and dielectric conditions.¹⁸⁻²⁰ Regardless of the type of lattice structure, the high-dielectric component of the photonic crystal needs to have a refractive index exceeding 2 (assuming that air is the low-dielectric component), while being optically transparent in and around the band gap wavelength region; for example, for an optimized diamond lattice the minimum refractive index is 2.0 in order to open a complete band gap, whereas for a close-packed face-centred cubic lattice of air spheres (inverse opal) the surrounding high-dielectric needs to have a refractive index of at least 2.8.^{19,20}

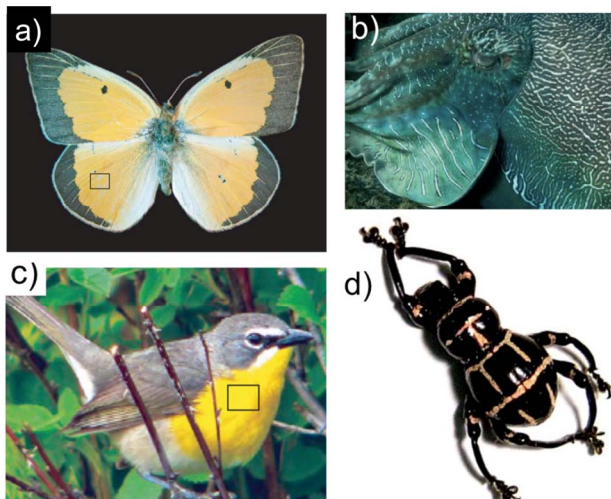


Figure 2. Examples of structural colours in nature. Colours arise from photonic structures in a) the wings of the butterfly *Colias eurytheme*, b) the skin of the cuttlefish *Sepia apama*, c) the feathers of the yellow-breasted chat *Icteria virens*, and d) the exoskeleton of the beetle *Pachyrhynchus moniliferus*. Figures a) and c) adapted from reference [86] and reproduced by permission of The Royal Society. Figure b) adapted from reference [87] and reproduced by permission of The Royal Society. Figure d) adapted from reference [30] and reproduced by permission of The Royal Society of Chemistry.

Interestingly, complete band gaps are absent in biological photonic crystals, despite millions of years of optimization. There has been no evolutionary advantage in selecting for such a phenomenon. For the purpose of producing colouration, incomplete band gaps (also referred to as ‘stopgaps’) are sufficient. In fact, stopgaps exhibit strong direction-dependent reflection behaviour and, therefore, are ideal for producing iridescent properties with different colours being reflected at different angles. Moreover, even for those species that require angle-independent colouration (i.e., with the appearance of a single reflective colour no matter what the angle of observation is), nature has found elegant solutions. For example, the photonic crystal community

has known for more than two decades that crystal structures based on a diamond lattice are by far the most promising for achieving near angle-independent reflection behaviour. While diamond-based lattices - the champion structures²¹ - have been achieved in photonic crystals operating at infrared wavelengths,²²⁻²⁷ fabricating these lattices for use in the visible part of the electromagnetic spectrum has proven extremely difficult.^{28,29} In contrast to our difficulties in fabricating diamond-based photonic lattices, beetles overcame this problem millions of years ago. Excellent examples are weevils, whose striking colouration is the result of light interacting with a diamond-based photonic crystal structure built into their exoskeleton scales made of cuticle.^{2,30}

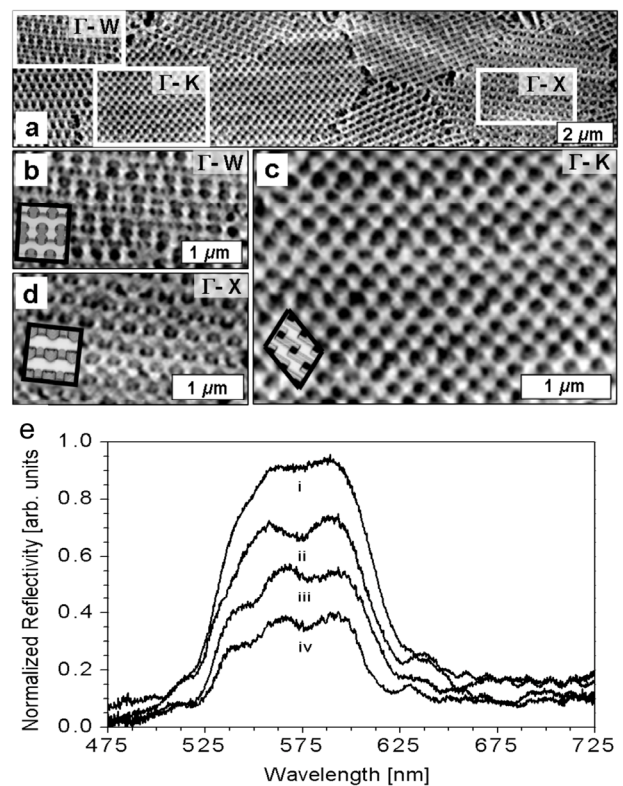


Figure 3. a) Scanning electron micrographs of the top-surface of a coloured scale of weevil *Lamprocyphus augustus* (see also Figure 1c). The photonic structure was exposed by focused ion beam milling and shows a pixelated photonic array. b), c), d) Views of individual single-crystalline domains with different crystal orientations. Insets show calculated dielectric functions. e) Optical reflection spectra taken from four different areas of the pixelated photonic arrays (spectra are displayed in stacked form). Reproduced with permission from reference [2]; copyright 2008, American Physical Society.

Almost 20 years after theoretical modelling identified diamond as the most effective lattice, the architectures discovered in blue, green and red coloured weevils in 2008 represent the first examples of diamond-based photonic crystals operating at visible wavelengths.² It is important to point out that biological diamond-structured

photonic crystals do not possess a complete band gap due to the low refractive index of cuticle (around 1.5). Nevertheless, these weevils produce near angle-independent colouration by organizing the diamond lattice into an array of differently-oriented single-crystalline domains (pixels), each with a size of 2-10 micrometres - too small to be resolved by typical animal or human eyes (Figure 3).² Besides highly-ordered diamond-based structures, this lattice geometry can also produce angle-independent colouration with low-index compounds in an 'amorphous' form. Amorphous diamond photonic structures were theoretically predicted in 2008,³¹ and their characteristic feature is the presence of some degree of short-range diamond-order, while the long-range order is lost. Interestingly, four years after their theoretical prediction, amorphous diamond-structured photonic crystals were discovered in bird feathers.³² Moreover, it was shown that this structure can produce angle-independent colouration in a low refractive index keratin matrix.

3. Evolutionary Development of Biological Photonic Structures

Iridescence is of great importance in the world of insects, which often rely on structural colours for defence, camouflage and reproduction.¹² A key advantage of structural colours over pigmented colours is that they produce more intense colouration than pigments, especially in low light conditions.³³ For example, the multilayer and diffractive structures in the scales of *Morpho* butterflies produce reflection so intense it can be seen up to half a kilometre away. For insects such as beetles and weevils, the structures allow for bright colouration, even in the dimly lit environments of forests. The amount of light penetration in these forests can be as low as 2 percent, and these are areas where the beetles are frequently found. Given the wide range of applications combined with the different environmental conditions that biological structures have to function in, it is not

surprising to find an enormous diversity among biological photonic structures: from simple multilayer film composites to two- and three-dimensional periodic lattices with chiral, honeycomb and cubic geometries (and combinations thereof).³⁴⁻⁴⁰ Moreover, these structures were selected for many millions of years to create a particular colour under particular conditions.

While the evolutionary history of structural colour is difficult to reconstruct, some of this information can be drawn from the fossil records and the evolutionary lineages (Figure 4). The development of photonic structures involved a gradual increase in complexity and colouration, from scutes (patterned, hardened external parts of insect wing scales) to multilayer structures, diffraction gratings and, finally, to the complex cubic structures we find in some insects today.⁴¹⁻⁴³ The earliest multilayer systems and gratings in the fossil record were discovered within the hairs and spines of beetles (Figure 5) found in the Burgess shale fossils from the Cambrian, 515 million years ago (mya).⁴¹ Within the spines, the diffraction gratings were aligned in the same direction regardless of the turns and twists of the spines, indicating that these periodic structures were not simply a product of fossilization. However, directly relating these structural features to particular optical properties is very difficult, because the fossil record often does not perfectly preserve the lattice spacing and feature sizes of the periodic structures.⁴⁴ Since changes in the periodic lengths in photonic structures are directly related to the wavelength of reflected/diffracted light, the colours we find in fossilized periodic structures are not necessarily the same as they were in the living organisms. Nevertheless, these early examples of periodic structures are of tremendous value in studying the evolution of structure formation and the development of more sophisticated photonic structures. For example, morphology studies by Wickham et al. have revealed that the initially planar multilayers have evolved into tilted structures to compensate for the angle dependence of their reflection.⁴³

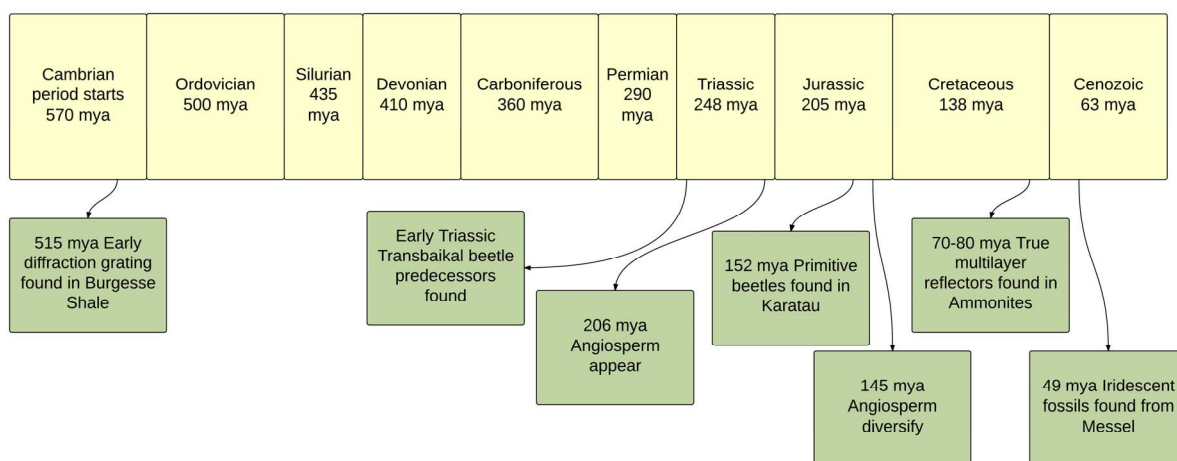


Figure 4. Timetable showing the evolutionary history and development of structural colours in biology

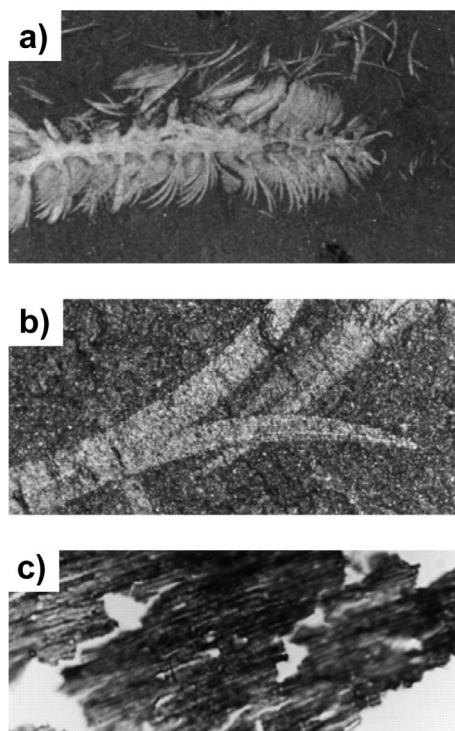


Figure 5. Micrographs of the Burgess stem-group polychaete *Canadia spinosa* fossil. a) Anterior half of the animal, b) details of paleae (spines), and c) the surface of a palea as removed from the rock matrix, revealing the remnants of a diffraction grating with a ridge spacing of 900nm. Adapted from reference [41] and reproduced by permission of The Royal Society.

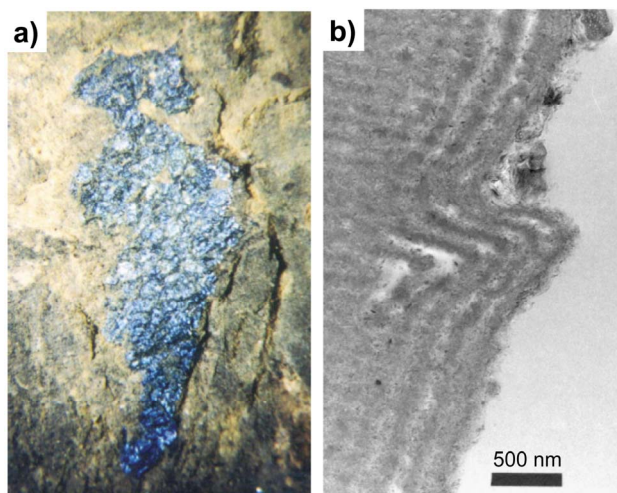


Figure 6. a) Photograph of a fossilized beetle specimen embedded in rock (Messel oil shales). The length of the specimen is 4 mm. b) Transmission electron micrograph of the outer surface of the elytron showing fine lamination. Adapted from reference [42] and reproduced by permission of The Royal Society.

The largest finds of early fossils of beetles are from the early Triassic (~250 mya) and were found in Transbaikal, Mongolia. The earliest species appear to be confined to conifers, as determined by being localized together in the fossil record and the presence of characteristic bite marks

on the plants.⁴⁵ However, with the first appearance of the angiosperm (around the beginning of the Jurassic, 206 mya) and their rapid diversification at the beginning of the Cretaceous, 145 mya, host switching of the beetles from gymnosperms to angiosperms occurred. This was assisted by the formation of the elytra and other body modifications, such as the enlargement of ventral sternites and a rigid connection to the head.⁴⁶ An important fossil find of beetles are the Messel - Germany - oil shales (Figure 6). These shales are up to 40 percent water and are able to preserve the optical properties of some of the fossilized photonic structures of beetles from 49 mya.⁴² These findings give important insights into early structural colours, especially their development, diversification and increase in structural complexity.

4. Ecological Aspects of Structural Colours

Identifying the most promising biological structures as blueprints for creating particular functions in technological applications can be very challenging, and knowledge about ecological aspects becomes very important. In the following, we will give some insights into the origins and roles of biological photonic structures using the example of the insect order Coleoptera - the beetles. Photonic structures are widespread in beetles and have undergone several adaptive radiations.^{31,47-49} With this in mind, these structures must convey some evolutionary advantage to have produced the diversity seen today. These complex structures are not restricted to any specific lineage in either the beetles or weevils, and the genera with iridescent species are varied. One feature they have in common, however, is that those insect species and genetic families that possess photonic structures have thrived and proliferated widely.

A widespread purpose of structural colours in insect species - and Coleoptera in particular - is camouflage.⁵⁰ Insect species that are exposed during the day (or become active late in the day) are usually camouflaged to some extent; they typically try to resemble flowers, lichens or moss. For example, some beetles are marked with black stripes, which match the colour of prevalent flowers (presumably a strategy of camouflage while feeding). Other examples are metallic iridescent beetles, which fly during sunny hours and rest on bushes and trees where their metallic colours might provide some camouflage. In general, the classically iridescent beetles are primarily diurnally active; however, there are examples of brilliantly metallic species of longhorn beetles (the Cerambycidae) that are nocturnal. Besides longhorn beetles, another beetle clade has evolved to create some of the most interesting, three-dimensional photonic structures - the monophyletic weevils (the Curculionidae). These beetles tend to live and mate upon the same host plants on which they were hatched.⁵¹ The selection of a new host

plant and the niche provided by selecting a new host plant provides essential prezygotic barriers, enabling sympatric speciation. For weevils, much like the longhorn beetles, host plants dominate the lifecycle. The close association between beetles and plants would indicate that they diversify together, and possibly that diversifications within the plants cause diversifications within the beetles. The herbivore beetles are significantly more diverse than non-herbivore beetles, indicating that comingling with plants may be a contributing factor to beetle diversification.⁵² Host plant restriction and evolution associated with the rapidly diversifying angiosperms likely helped spread the beetles, which were developing photonic structures.

Besides camouflage, structural colours are also often used for signalling and deceptive mimicry.^{12,50} The two main forms of mimicry in the insect world are Müllerian and Batesian mimicry.⁵³ In the former, two or more poisonous species - which share common predators - mimic each other's appearance and warning signs, whereas in Batesian mimicry a harmless species uses the appearance and signals of a poisonous or distasteful species to deceive a common predator. The lineages of Cerambycidae are known to heavily use Batesian mimicry. For example, they have adapted dark-coloured elytra and flattened body forms to match the appearance of ants.⁵⁴ Other insects that Cerambycidae mimic by this strategy include bees and wasps.

There is also a substantial amount of Batesian mimicry used by Cerambycidae to mimic the appearance of inedible weevils. *Pachyrrhynchus congestus pavonius* is a dark weevil with bright iridescent spots originating from

domains of ordered photonic structures (Figure 7). Studies conducted by Welch et al. in *P. congestus pavonius* led the researchers to conclude that their striking colour acts as a warning indicating they are inedible.⁴⁸ The specific colouration and colour patterning of this inedible weevil is mimicked by several edible species, particularly by Longicorn beetles of the Cerambycidae family. Weevils that survived due to advertising their inedibility to birds, their main predators,⁵⁵ may have led to mimicry in longhorn beetles who had modifiable structures.

There are several cases, however, in which the advantage of carrying particular structural colouration is not as obvious as in the examples given above. For example, comparison of the similar weevils *Eudiagogus pulcher* and *Eudiagogus rosenschoeldi* who live in a similar environment with few predators, demonstrates that there does not seem to be a conferred advantage to the beetle with iridescent scales.⁵⁶ While both weevils have very similar colouration patterns, only that of *E. pulcher* is known to have an intense iridescence formed from a cubic photonic structure.³¹ These species share several host plants, have similar eating habits, times of activity, flight habits and hibernation habits. It is hard to determine whether *E. pulcher* does have some natural advantage over *E. rosenschoeldi* - at the very least, in their current environment neither has any source of significant predation. Nevertheless, while there is no direct competition between these two species, under harsh conditions *E. pulcher* is found in higher concentrations on the shared host plants.⁵⁶ The reason for this is still not fully understood, and could be an example of 'incidental colour'.

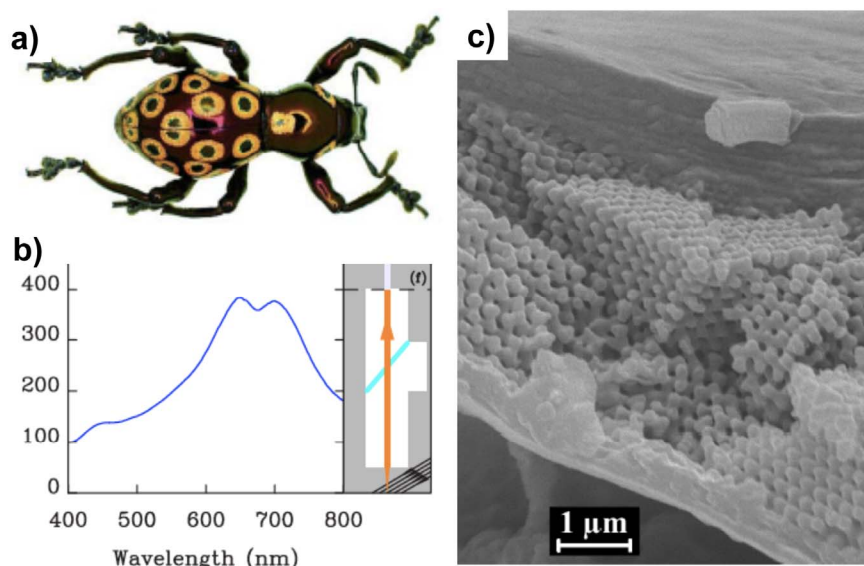


Figure 7. a) Photograph of the weevil *Pachyrrhynchus congestus pavonius* showing annular iridescent spots on the dorsal and lateral sides of its thorax and abdomen. b) Optical reflection spectrum of the red-orange iridescent spots on the weevil exoskeleton. c) Scanning electron microscope image of the three-dimensional photonic structure of the iridescent spots. Adapted and reproduced with permission from reference [48]; copyright 2007, American Physical Society.

Incidental colours are produced as the side products of structures with other, more important purposes. Excellent examples are the Abalone shell and the notoseta, spines from the sea mouse, *Aphrodita* sp.. The well-known, intensely iridescent Abalone shell, is produced by the sequential layering of proteins and calcium carbonate.⁵⁷ While this produces beautiful colours that have long been appreciated by numerous cultures, the colouration does not seem to have a role for the Abalone, being restricted to only the inner surface of the shell and completely shielded from illumination. The purpose of the structure of Abalone is to achieve high mechanical stability and durability by sequentially layering hard and soft compounds. Similarly, while the spines of the sea mouse produce brilliant iridescent colours when illuminated by sunlight,³⁶ this animal spends most of its time partially buried in sand. Most likely, the patterned spines and hairs fulfil a different purpose, and the structure may reduce drag while in sand and mud, aiding in burrowing behaviour.

Additional examples of structural functionalities in biology other than colouration include the reduction of water adhesion and reduced friction in the wet and sticky environments often encountered when burrowing and plant-boring (beetles),⁴⁷ thermal regulation, aerodynamic drag, frictional forces (crustaceans),^{43,58} superhydrophobicity and self-cleaning (locust and butterflies).⁵⁹

5. Photonic Structure-formation Pathways in Biology

Over the past few decades, many synthetic procedures have been developed to produce photonic crystals.^{8,9,22-30} A basic design rule for a photonic crystal is that band gaps form at wavelength ranges of the electromagnetic spectrum that are of the same order of the periodic length (or lattice constant) of the photonic crystal.¹³⁻¹⁵ For example, for a band gap within the microwave range, a periodic structure with millimetre lattice constants is needed, while band gaps in the infrared and visible portion of the spectrum form in periodic structures with lattice constants within the micrometre and nanometre ranges, respectively. Naturally, to cover such a wide range of feature sizes different fabrication methods are needed, from mechanical drilling (microwave) to light-based patterning techniques (infrared) and self-assembly methods (visible and ultraviolet).^{14,15}

Generally, man-made photonic crystals are fabricated by either an engineering or a self-assembly approach. The latter can be divided into supramolecular and colloidal assembly methods,^{8,9,60-62} whereas examples of engineering approaches are holographic lithography,²⁵ direct laser writing,²⁸ direct ink writing,²⁴ and electron-beam lithography.²⁷ The advantage of engineering methods is the wide range of photonic crystal structures

that can be formed, including the champion diamond-based lattices.²¹ While these methods are excellent tools for fabricating photonic crystals operating in the infrared and higher wavelengths (Figure 8), creating diamond-based lattices with feature sizes small enough to achieve band gaps within the visible range of the electromagnetic spectrum has proven extremely difficult. Only very recently have engineering methods started to successfully extend into the visible range by fabricating diamond-based woodpile structures.^{29,30} Self-assembly methods, on the other hand, have long been used to create photonic crystals with lattice constants spanning the infrared, visible and ultraviolet spectral ranges.^{60,63} Nonetheless, except for some interesting examples in the ultraviolet,⁶⁰ self-assembly techniques have unfortunately been incapable of fabricating the most-desired diamond-based lattices.

In contrast to our limited structure formation capabilities at visible wavelengths, nature is again a step ahead of us. Biological systems have developed photonic crystals with both the champion diamond-based structures and lattice constants of a few hundred nanometres - photonic crystals optimized to strongly interact with visible light.^{1,34-40} Moreover, nature has managed to synthesize these photonic structures under rather simple environmental conditions and with limited resources. In the following, we will give a summary of some recent insights into photonic structure formation in butterflies and beetles, focusing on the most desirable gyroid and diamond-based lattices.

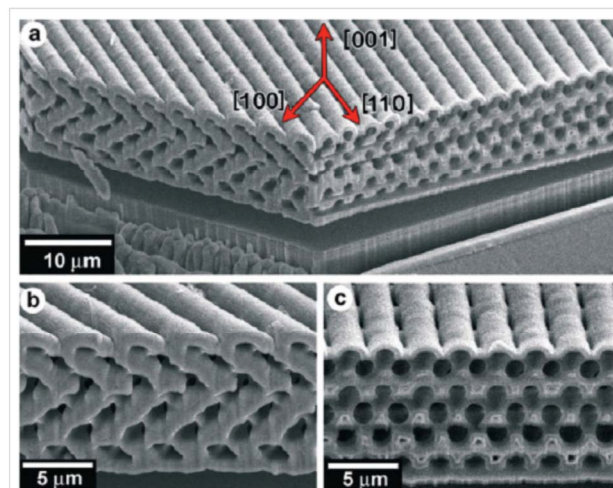


Figure 8. Scanning electron microscopy views of a germanium photonic crystal with a diamond-based woodpile structure. The sample was fabricated by the direct ink writing of a template followed by chemical vapour deposition of germanium. This structure has a complete photonic band gap in the infrared region of the electromagnetic spectrum. Adapted from reference [24]. Copyright Wiley-VCH Verlag GmbH & Co. KGaA. Reproduced with permission.

In early work on butterfly wing scales conducted by Ghiradella et al., cross-sectional scanning electron microscopy imaging was performed at various stages of structure formation in scales.^{64,65} The authors concluded that in some butterflies iridescent chitin structures are formed by the cellular membrane of the smooth endoplasmic reticulum. Later, Michielsen and Stavenga found gyroid-structured photonic lattices,³⁹ and Galusha et al. discovered that certain weevils create their iridescent colouration by diamond-based photonic crystal lattices (Figure 3).² These discoveries were enabled by various imaging and scattering methods, including three-dimensional transmission electron microscopy and sequential focused ion beam/scanning electron microscopy imaging.

Recently, Prum et al. gained deeper insights into the formation of gyroid lattices in iridescent scales through a combination of small angle X-ray scattering and photonic band gap structure calculations.⁶⁶ They concluded that these structures are formed by a multiple-step mechanism involving both the cellular plasma membrane and the smooth endoplasmic reticulum membrane to initially form a double-gyroid structure. The biopolymer chitin is deposited and polymerized within the space that forms the core of one of the gyroid networks (Figure 9).

Subsequent to cell death (and hardening of the chitin), the membranes and other cellular components decay and are replaced by air, leaving behind a single gyroid lattice composed of chitin.⁶⁶ This connection of gyroid structures and cellular cubic membrane folding is an important step in understanding photonic crystal formation in biological systems. However, it leaves the central question unanswered: How do cubic membranes form from phospholipid building blocks?

While it has been shown that phospholipid systems self-assemble into bicontinuous cubic crystal structures, the lattice constants of such assemblies are typically within the range of a few tens of nanometres.⁶⁷ With the help of different additives and modifying the atomic structure of the lipids, the lattice parameters could be increased to the 100 nanometre range;⁶⁸⁻⁷⁰ however, these values are still far below the ultra-high lattice constants of cellular cubic membranes (200-500 nanometres) found in mitochondria and ordered smooth endoplasmic reticulum, also referred to as OSER, as shown in Figure 10.⁷¹⁻⁷³ While the exact mechanism of cubic membrane formation is still not fully resolved, recent studies have identified several key components, such as conical phospholipids,^{74,75} cholesterol molecules⁷⁶ and membrane proteins.^{71,77-81}

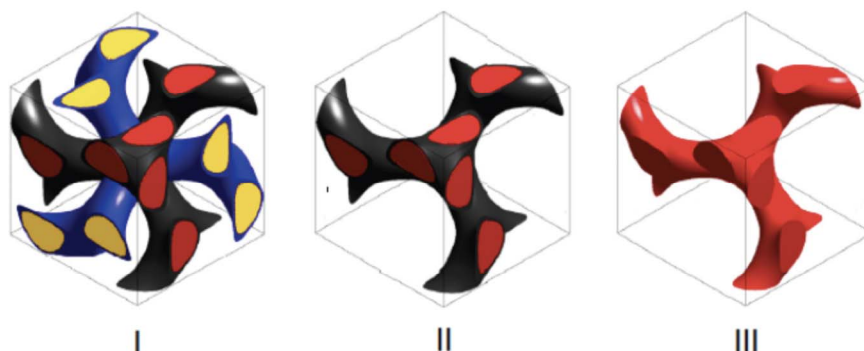


Figure 9. Structural models of a developing butterfly wing scale structure with double gyroid (I) and single gyroid (II and III) lattices. Model III is that of the final chitin lattice found in butterfly wing scales. Reproduced with permission from reference [66], National Academy of Sciences, U.S.A.

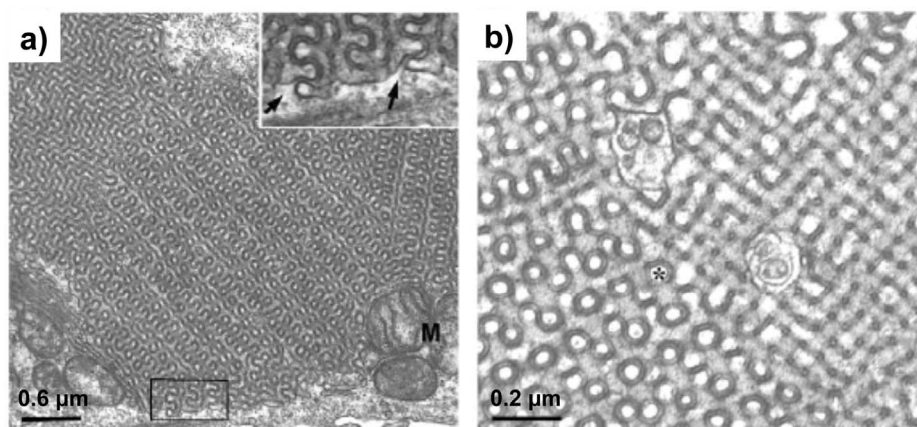


Figure 10. TEM images of ordered smooth endoplasmic reticulum (OSER) membranes with bicontinuous cubic symmetry at a) low and b) high magnification. Reprinted from reference [71]; copyright (2006), with permission from Elsevier.

Conical lipids have packing parameters greater than one and induce negative curvature within the lipid bilayer. The lipid's head and splayed chains form a wedge in the bilayer,⁸² facilitating the formation of gyroid and diamond-structured lattices. The effect of the presence of cholesterol is thought to be similar to conical lipids. Its planar shape makes cholesterol fit between phospholipid tails, inducing tail separation.⁷⁶ Thus, the presence of cholesterol can facilitate a convoluted endoplasmic reticulum, which is an important initial step of cubic membrane formation. Among the many membrane proteins present in cells,⁷⁷⁻⁸¹ those with the ability to span the lipid-bilayer membrane through homotypic interactions are of particular importance.^{79,80} Such membrane proteins (e.g., cytochrome b5) can induce a high curvature in lamellar bilayers and the formation of cubic phases.

These recent insights into the formation mechanism of gyroid and diamond-structure photonic crystals in biological systems are a tremendous step towards the bench-top fabrication of these most sought-after photonic structures through directed and self-assembly methods. While there are still many hurdles to overcome in finding the holy grail of photonic crystals - large-scale diamond-based photonic crystals with low defect densities and tunable lattice parameters - it seems that it was again a hint from nature that opened the door to a major technological breakthrough.

6. Conclusions

In our attempts to produce photonic structures for use in modern-world applications, taking a look at nature for ideas and inspiration can be very beneficial. Nature has produced a wide variety of photonic structures throughout millions of years of development. Of course, these techniques taken from nature require modification to efficiently interface with modern technology and devices. However, we can benefit tremendously from studying the variety of biological architectures, the clever design solutions developed to overcome inherent limitations such as low refractive index components, and the effectiveness and elegance of how the most complex structures are formed in simple environmental conditions and with limited resources.

It seems apparent that when nature provides examples and protocols for the production of these complex photonic structures, piggybacking on her work can save time and money.⁸³⁻⁸⁵ However, nature did not develop or optimize structures for technological applications, but rather for camouflaging, signalling and mimicking. In this review article, we attempted to provide some insights into the purpose and the evolutionary and ecological

development of photonic structures in biology. The comparison of photonic structures in biology with idealized technological structures reveals significantly different design strategies - most likely due to different evolutionary and innovation 'pressures', respectively. When evolution selected for certain structures, colouration was often not the original function and the variety of simple photonic structure predecessors most likely had roles related to temperature regulation, reduced drag and mechanical reinforcement. Therefore, the term 'structural colour' does not describe the ancestry or diversity of these structures, such that 'structural function' may be a more appropriate term. The hope is that as materials scientists become increasingly appreciative of the work achieved by evolution, we will progressively learn from and be inspired by these fascinating biological examples of structural function.

7. Acknowledgments

We would like to thank Bryce Turner, Michael Dahlby, Julie Chapman and Dr. James Casanova for their valuable assistance. This work was supported by the NSF MRSEC programme at the University of Utah under grant DMR-1121252, and in part by the NSF under award DMR-1005382.

8. References

- [1] M. Srinivasarao, Nano-optics in the Biological World: Beetles, Butterflies, Birds, and Moths. *Chemical Reviews*, 99: 1935-1962, 1999.
- [2] J. W. Galusha, L. R. Richey, J. S. Gardner, J. N. Cha, M. H. Bartl, Discovery of a Diamond-Based Photonic Crystal Structure in Beetle Scales. *Physics Review E*, 77: 050904, 2008.
- [3] P. Vukusic, J. R. Sambles, Photonic Structures in Biology. *Nature*, 24: 852-855, 2003.
- [4] C. W. Mason, Structural Color in Insects I. *Journal of Physical Chemistry*, 30: 383-395, 1926.
- [5] C. W. Mason, Structural Color in Insects II. *Journal of Physical Chemistry*, 31: 321-354, 1927.
- [6] C. B. Murray, D. J. Norris, M. G. Bawendi, Synthesis and Characterization of Nearly Monodisperse CdE (E = Sulfur, Selenium, Tellurium) Semiconductor Nanocrystallites. *Journal of the American Chemical Society*, 115: 8706-8715, 1993.
- [7] A. P. Alivisatos, Semiconductor Clusters, Nanocrystals, and Quantum Dots. *Science*, 271: 933-937, 1996.
- [8] B. T. Holland, C. F. Blanford, A. Stein, A., Synthesis of Macroporous Minerals with Highly Ordered Three-dimensional Arrays of Spheroidal Voids. *Science*, 281: 538, 1998.
- [9] J. Wijnhoven, W. L. Vos, Preparation of Photonic Crystals Made of Air Spheres in Titania. *Science*, 281: 802, 1998.

- [10] L.F. Boesel, C. Greiner, E. Arzt, A. del Campo, Gecko-inspired Surfaces: a Path to Strong and Reversible Dry Adhesives. *Advanced Materials*, 22: 2125-2137, 2010.
- [11] S. Nishimoto, B. Bushan, Bioinspired Self-cleaning Surfaces with Superhydrophobicity, Superoleophobicity, and Superhydrophilicity, *RSC Advances*, 3: 671-690, 2013.
- [12] S. M. Doucet, M. G. Meadows, Iridescence: a Functional Perspective. *Journal of the Royal Society Interface*, 6: S115-S132, 2009.
- [13] J. D. Joannopoulos, P. R. Villeneuve, S. H. Fan, Photonic Crystals: Putting a New Twist on Light. *Nature*, 386: 143-149, 1997.
- [14] C. M. Soukoulis, editor. *Photonic Crystals and Light Localization*. Kluwer: Dordrecht, 2001.
- [15] C. Lopez, Materials Aspects of Photonic Crystals. *Advanced Materials*, 15: 1679-1704, 2003.
- [16] E. Yablonovitch, Inhibited Spontaneous Emission in Solid-State Physics and Electronics. *Physical Review Letters*, 58: 2059-2062, 1987.
- [17] S. John, Strong Localization of Photons in Certain Disordered Dielectric Superlattices. *Physical Review Letters*, 58: 2486-2489, 1987.
- [18] A. Moroz, Metallo-Dielectric Diamond and Zinc-Blende Photonic Crystals. *Physical Review B*, 66, 115109, 2002.
- [19] M. Maldovan, C. K. Ullal, C. W. Carter, E. L. Thomas, Exploring for 3D Photonic Bandgap Structures in the 11 f.c.c. Space Groups. *Nature Materials*, 2: 664-667, 2003.
- [20] K. Busch, S. John, Photonic Band Gap Formation in Certain Self-Organizing Systems. *Physical Review E*, 58: 3896-3908, 1998.
- [21] M. Maldovan, E. L. Thomas, Diamond-Structured Photonic Crystals. *Nature Materials*, 3: 593-600, 2003.
- [22] K. M. Ho, C. T. Chan, C. M. Soukoulis, Existence of a Photonic Gap in Periodic Dielectric Structures. *Physical Review Letters*, 65: 3152-3155, 1990.
- [23] E. Yablonovitch, T. J. Gmitter, Photonic Band Structure: the Face-Centered-Cubic Case Employing Nonspherical Atoms. *Physical Review Letters*, 67: 2295-2298, 1991.
- [24] F. Garcia-Santamaria, M. J. Xu, V. Lousse, S. H. Fan, P. V. Braun, J. A. Lewis, A Germanium Inverse Woodpile Structure with a Large Photonic Band Gap. *Advanced Materials*, 19: 1567, 2007.
- [25] S. Y. Lin, J. G. Fleming, D. L. Hetherington, B. K. Smith, R. Biswas, K. M. Ho, M. M. Sigalas, W. Zubrzycki, S. R. Kurtz, J. Bur, A Three-dimensional Photonic Crystal Operating at Infrared Wavelengths. *Nature*, 394: 251-253, 1998.
- [26] M. H. Qi, E. Lidorikis, P. T. Rakich, S. G. Johnson, J. D. Joannopoulos, E. P. Ippen, H. I. Smith, A Three-dimensional Optical Photonic Crystal with Designed Point Defects. *Nature*, 429: 538-542, 2004.
- [27] S. Wong, M. Deubel, F. Perez-Willard, S. John, G. A. Ozin, M. Wegener, G. von Freymann, Direct Laser Writing of Three-dimensional Photonic Crystals with a Complete Photonic Bandgap in Chalcogenide Glasses. *Advanced Materials*, 18: 265, 2006.
- [28] G. Subramania, Q. Li, Y.-J. Lee, J. J. Figiel, G. T. Wang, A. J. Fischer, Gallium Nitride Based Logpile Photonic Crystals. *Nano Letters*, 11: 4591-4596, 2011.
- [29] A. Frölich, J. Fischer, T. Zebrowski, K. Busch, M. Wegener, Titania Woodpiles with Complete Three-dimensional Photonic Bandgaps in the Visible. *Advanced Materials*, 25: 3588-3592, 2013.
- [30] J. W. Galusha, L. R. Richey, M. R. Jorgensen, J. S. Gardner, M. H. Bartl, Study of Natural Photonic Crystals in Beetle Scales and their Conversion into Inorganic Structures via a Sol-gel Bio-templating Route. *Journal of Materials Chemistry*, 20: 1277-1284, 2010.
- [31] K. Edagawa, S. Kanoko, M. Notomi, Photonic Amorphous Diamond Structure with a 3D Photonic Band Gap. *Physical Review Letters*, 100: 013901, 2008.
- [32] H. Yina, B. Donga, X. Liua, T. Zhana, L. Shia, J. Zia, E. Yablonovitch, Amorphous Diamond-structured Photonic Crystal in the Feather Barbs of the Scarlet Macaw. *Proceedings of the National Academy of Sciences*, 109: 10798-10801, 2012.
- [33] S. Vignolini, P. J. Rudall, A. V. Rowland, A. Reed, E. Moyroud, R. B. Faden, J. J. Baumberg, B. J. Glover, U. Steiner, Pointillist Structural Color in Pollia Fruit. *Proceedings of the National Academy of Sciences*, 109: 15712-15715, 2012.
- [34] H. Ghiradella, D. Aneshansley, T. Eisner, R. E. Silberglied, H. E. Hinton, Ultraviolet Reflection of a Male Butterfly: Interference Color Caused by Thin-Layer Elaboration of Wing Scales. *Science*, 178: 1214-1217, 1972.
- [35] J. P. Vigneron, J. F. Colomer, N. Vigneron, V. Lousse, Natural Layer-by-layer Photonic Structure in the Squamae of *Hoplia Coerulea* (Coleoptera). *Physical Review E*, 72: 904, 2005.
- [36] A. R. Parker, R. C. McPhedran, D. R. McKenzie, L. C. Botten, N. A. P. Nicorovici, Photonic Engineering - Aphrodite's Iridescence. *Nature*, 409: 36-37, 2001.
- [37] R. O. Prum, E. R. Dufresne, T. Quinn, K. Waters, Development of Colour-Producing beta-Keratin Nanostructures in Avian Feather Barbs. *Journal of the Royal Society Interface*, 6: S253-S265, 2009.
- [38] J. P. Vigneron, J. F. Colomer, M. Rassart, A. L. Ingram, V. Lousse, Structural Origin of the Colored Reflections from the Black-Billed Magpie Feathers. *Physical Review E*, 73: 021914, 2006.
- [39] K. Michielsen, D. G. Stavenga, Gyroid Cuticular Structures in Butterfly Wing Scales: Biological Photonic Crystals. *Journal of the Royal Society Interface*, 5: 85-94, 2008.

- [40] A. Risbud, M. H. Bartl, Solution-based Techniques for Biomimetics and Bioreplication, In: A. Lakhtakia, R. Martin-Palma, editors. *Engineered Biomimicry*. Elsevier: Waltham, 2013, pp. 359-382.
- [41] A. R. Parker, A Geological History of Reflecting Optics. *Journal of the Royal Society Interface*, 2: 1-17, 2005.
- [42] A. R. Parker, D. R. McKenzie, The Cause of 50 Million Year-old Colour. *Proceedings of the Royal Society of London B*, 270: S151–S153, 2003.
- [43] S. Wickham, M. C. J. Large, L. Poladian, L. S. Jermin, Exaggeration and Suppression of Iridescence: the Evolution of Two-dimensional Butterfly Structural Colours. *Journal of the Royal Society Interface*, 3: 99-109, 2006.
- [44] M. E. McNamara, D. E. G. Briggs, P. J. Orr, H. Noh, C. Hui, The Original Colours of Fossil Beetles. *Proceedings of the Royal Society B*, 279: 1114–1121, 2012.
- [45] L. V. Arnoldi, N. J. Vandenberg, *Mesozoic Coleoptera*. National Science Foundation: Washington DC, 1992.
- [46] W. Hennig, *Insect Phylogeny*. Wiley&Sons: Hoboken, 1981.
- [47] A. E. Seago, P. Brady, J. P. Vigneron, T. D. Schultz, Gold Bugs and Beyond: a Review of Iridescence and Structural Colour Mechanisms in Beetles (Coleoptera). *Journal of the Royal Society Interface*, 6: 165-184, 2009.
- [48] V. Welch, V. Lousse, O. Deparis, A. Parker, J. P. Vigneron, Orange Reflection from a Three-dimensional Photonic Crystal in the Scales of the Weevil *Pachyrhynchus Congestus Pavonius* (Curculionidae). *Physical Review E*, 75: 041919, 2007.
- [49] V. Sharma, M. Crne, J. O. Park, M. Srinivasarao, Structural Origin of Circularly Polarized Iridescence in Jeweled Beetles. *Science*, 325: 449-451, 2009.
- [50] M. G. Meadows, M. W. Butler, N. I. Morehouse, L. A. Taylor, M. B. Toomey, K. J. McGraw, R. L. Rutowski, Iridescence: Views from Many Angles. *Journal of the Royal Society Interface*, 6: S107-S113, 2009.
- [51] R. Anderson, Weevils and Plants: Phylogenetic versus Ecological Mediation of Evolution of Host Plant Associations in Curculioninae (Coleoptera: Curculionidae). *Memoirs of the Entomological Society of Canada*, 125: 197-232, 1993.
- [52] C. Mitter, B. Farrell, D. J. Futyma, Phylogenetic Studies of Insect-plant Interactions: Insights into the Genesis of Diversity. *Trends in Ecology & Evolution*, 6: 290-293, 1991.
- [53] A. Meyer, Repeating Patterns of Mimicry. *PLoS Biology*, 4: 1675-1677, 2006.
- [54] D. A. Grimaldi, S. E. Michael, *Evolution of the Insects* (Cambridge Evolution Series. Cambridge University Press: Cambridge, 2005.
- [55] F. J. Bianchi, C. J. Booki, T. Tschardt, Sustainable Pest Regulation in Agricultural Landscapes: a Review on Landscape Composition, Biodiversity and Natural Pest Control. *Proceedings of the Royal Society Biology*, 273: 1715-1727, 2006.
- [56] P. W. Kovarik, H. Burke, Observations on the Biology and Ecology of Two Species of *Eudiagogus* (Coleoptera: Curculionidae). *The Southwestern Naturalist*, 34: 196-212, 1989.
- [57] B. L. Smith, T. E. Schäffer, M. Viani, J. B. Thompson, N. A. Frederick, J. Kindt, A. Belcher, G. D. Stucky, D. E. Morse, P. K. Hansma, Molecular Mechanistic Origin of the Toughness of Natural Adhesives, Fibres and Composites. *Nature*, 399: 761-763, 1999.
- [58] P. J. Stephens, The Effects of Temperature and Acclimation on Crustacean Nerve-muscle Physiology. *The Biological Bulletin*, 169: 92-105, 1985.
- [59] J. Genzer, A. Marmur, Biological and Synthetic Self-cleaning Surfaces. *Material Research Society Bulletin*, 33: 742-746, 2008.
- [60] A. M. Urbas, M. Maldovan, P. DeRege, E. L. Thomas, Bicontinuous Cubic Block Copolymer Photonic Crystals. *Advanced Materials*, 14: 1850-1853, 2002.
- [61] A. Blanco, E. Chomski, S. Grabtchak, M. Ibsate, S. John, S. W. Leonard, C. Lopez, F. Meseguer, H. Miguez, J. P. Mondia, G. A. Ozin, O. Toader, H. M. van Driel, Large-scale Synthesis of a Silicon Photonic Crystal with a Complete Three-Dimensional Bandgap Near 1.5 Micrometres. *Nature*, 405: 437-440, 2000.
- [62] Y. A. Vlasov, X. Z. Bo, J. C. Sturm, D. J. Norris, On-chip Natural Assembly of Silicon Photonic Bandgap Crystals. *Nature*, 414: 289-293, 2001.
- [63] D. J. Norris, E. G. Arlinghaus, L. Meng, R. Heiny, L. E. Scriven, Opaline Photonic Crystals: How Does Self-Assembly Work?. *Advanced Materials*, 16: 1393, 2004.
- [64] H. Ghiradella, Light and Color on the Wing: Structural Colors in Butterflies and Moths. *Applied Optics*, 30: 3492-3500, 1991.
- [65] H. T. Ghiradella, M. W. Butler, Many Variations on a Few Themes: a Broader Look at Development of Iridescent Scales (and Feathers). *Journal of the Royal Society Interface*, 6: S243-S251, 2009.
- [66] V. Saranathan, C. O. Osuji, S. G. Mochrie, H. Noh, S. Narayanan, A. Sandy, E. R. Dufresne, R. O. Prum, Structure, Function, and Self-assembly of Single Network Gyroid (I4132) Photonic Crystals in Butterfly Wing Scales. *Proceedings of the National Academy of Sciences*, 107: 11676-11681, 2010.
- [67] C. V. Kulkarni, T.-Y. Tang, A. M. Seddon, J. M. Seddon, O. Ces, R. H. Templer, Engineering Bicontinuous Cubic Structures at the Nanoscale – the Role of Chain Splay. *Soft Matter*, 6: 3191-3194, 2010.
- [68] R. H. Templer, J. M. Seddon, N. A. Warrender, A. Syrykh, Z. Huang, R. Winter, J. Erbes, Inverse Bicontinuous Cubic Phases in 2:1 Fatty Acid/Phosphatidylcholine Mixtures. The Effects of Chain Length, Hydration, and Temperature. *Journal of Physical Chemistry B*, 102: 7251-7261, 1998.

- [69] B. G. Tenchov, R. C. MacDonald, D. P. Siegel, Cubic Phases in Phosphatidylcholine-Cholesterol Mixtures: Cholesterol as Membrane "Fusogen". *Biophysical Journal*, 91: 2508-2516, 2006.
- [70] R. Winter, J. Erbes, R. Templer, J. Seddon, A. Syrykh, N. Warrender, G. Rapp, Inverse Bicontinuous Cubic Phases in Fatty Acid/Phosphatidylcholine Mixtures: the Effects of Pressure and Lipid Composition. *PhysChemChemPhys*, 1, 887-893, 1999.
- [71] N. Borgese, M. Francolini, E. Snapp, Endoplasmic Reticulum Architecture: Structures in Flux. *Current Opinion in Cell Biology*, 18: 358-364, 2006.
- [72] Z. A. Almsheerqi, S. D. Kohlwein, Y. Deng, Cubic Membranes: a Legend Beyond the Flatland of Cell Membrane Organization. *Journal of Cell Biology*, 173: 839-842, 2006.
- [73] M. H. Bartl, M. R. Dahlby, F. P. Barrows, Z. J. Richens, T. Terooatea, M. R. Jorgensen, Natural Photonic Crystals: Formation, Structure, Function. *SPIE Proceedings*, 8279: 827907, 2012.
- [74] Y. Deng, Z. A. Almsheerqi, G. Shui, M. R. Wenk, S. D. Kohlwein, Docosapentaenoic Acid (DPA) is a Critical Determinant of Cubic Membrane Formation in Amoeba Chaos Mitochondria. *FASEB Journal* 23: 2866-2871, 2009.
- [75] Y. Deng, M. Mieczkowski, Three-dimensional Periodic Cubic Membrane Structure in the Mitochondria of Amoebae Chaos Carolinensis. *Protoplasma* 203: 16-25, 1998.
- [76] W. Wang, L. Yang, H. W. Huang, Evidence of Cholesterol Accumulated in High Curvature Regions: Implication to the Curvature Elastic Energy for Lipid Mixtures. *Biophysical Journal*, 92: 2819-2830, 2007.
- [77] D. Rhinow, N. Hampp, Curvature of Purple Membranes Comprising Permanently Wedge-shaped Bacteriorhodopsin Molecules Is Regulated by Lipid Content. *Journal of Physical Chemistry B*, 114: 549-556, 2010.
- [78] R.-P. Baumann, A. P. Busch, B. Heidel, N. Hampp, A New Class of purple Membrane Variants for the Construction of Highly Oriented Membrane Assemblies on the Basis of Noncovalent Interactions. *Journal of Physical Chemistry B*, 116: 4134-4140, 2012.
- [79] D. Lingwood, S. Schuck, C. Ferguson, M. J. Gerl, K. Simons, Generation of Cubic Membranes by Controlled Homotypic Interaction of Membrane Proteins in the Endoplasmic Reticulum. *Journal of Biological Chemistry*, 284: 12041-12048, 2009.
- [80] E. L. Snapp, R. S. Hegde, M. Francolini, F. Lombardo, S. Colombo, E. Pedrazzini, N. Borgese, J. Lippincott-Schwartz, Formation of Stacked ER Cisternae by Low Affinity Protein Interactions. *Journal of Cell Biology*, 163: 257-269, 2003.
- [81] L. Wang, A. B. Cowley, S. Terzyan, X. Zhang, D. R. Benson, Comparison of Cytochromes b5 from Insects and Vertebrates. *Proteins: Structure, Function, and Bioinformatics* 67: 293-304, 2007.
- [82] J. U. Bowie, Solving the Membrane Protein Folding Problem. *Nature* 438: 581-589, 2005.
- [83] M. R. Jorgensen, M. H. Bartl, Biotemplating Routes to Three-dimensional Photonic Crystals, *Journal of Materials Chemistry*, 21: 10583-10591, 2011.
- [84] D. P. Pulsifer, A. Lakhtakia, Background and Survey of Bioreplication Techniques. *Bioinspiration and Biomimetics* 6: 031001, 2011.
- [85] C. Zollfrank, P. Cromme, M. W. Rauch, H. Scheel, M. H. Kostova, K. Gutbrod, S. Gruber, D. Van Opdenbosch, Biotemplating of Inorganic Functional Materials from Polysaccharides. *Bioinspired, Biomimetic and Nanobiomaterials*, 1: 13-25, 2012.
- [86] M. D. Shawkey, N. I. Morehouse, P. Vukusic, A Protean Palette: Colour Materials and Mixing in Birds and Butterflies. *Journal of the Royal Society Interface*, 6: S221-S231, 2009.
- [87] L. M. Mäthger, E. J. Denton, N. J. Marshall, R. T. Hanlon, Mechanisms and Behavioural Functions of Structural Coloration in Cephalopods. *Journal of the Royal Society Interface*, 6: S149-S163, 2009.
- [88] J. W. Galusha, M. R. Jorgensen, M.H. Bartl, Diamond-structured Titania Photonic Band Gap Crystals from Biological Templates. *Advanced Materials*, 22: 107-110, 2010.